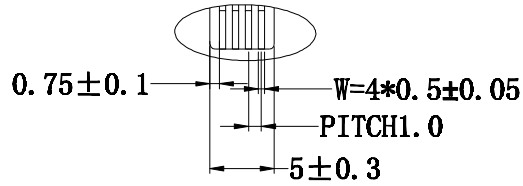


由 Autodesk 教育版产品制作

1	2	3	4	5	6	7
版本	变更原因			日期	姓名	

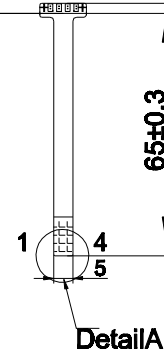
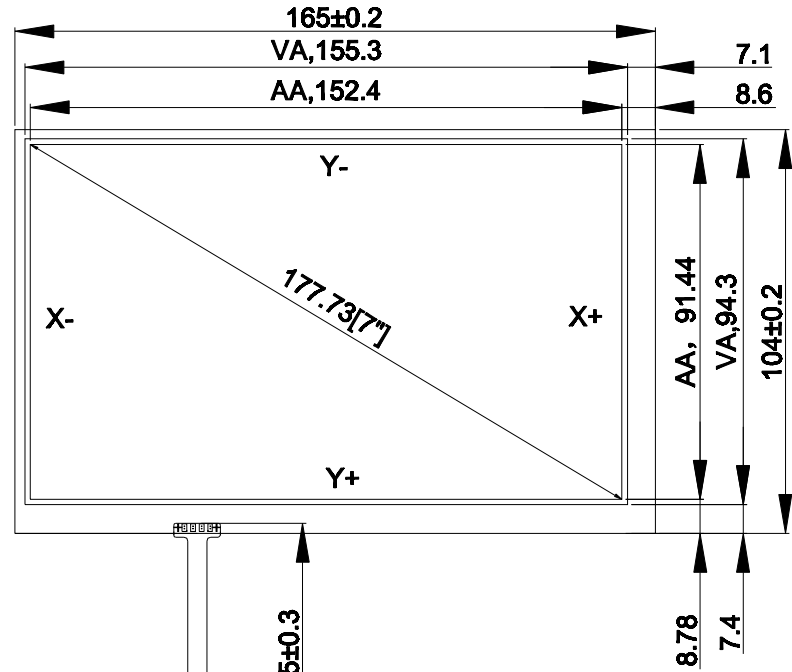
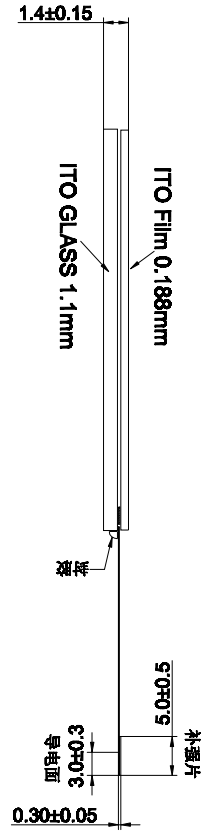


Detail A

PIN #	Assignment
1	Y-
2	X-
3	Y+
4	X+

Notes:

- 1.Type:Film to Glass
- 2.Operating Voltage:≤10v
- 3.Operation Temperature:-10℃~60℃
Storage Temperature:-20℃~70℃
- 4.Life Time:1.000.000 times
- 5.Connect Material:FPC
- 6.Response Time:≤10ms
- 7.Linearity:≤1.5%
- 8.Transmittance:≥75%
- 9.Surface Hardness≥3H(pencil)
- 10.Operation force:60g~150g
- 11.Resistance:X:450Ω-1100Ω Y:162Ω-396Ω



Detail A

TOLERANCES
(UNLESS OTHERWISE STATED)
DECIMALS ANGLES ±0.5%

>200MM	±2.00MM
1600< X ≤200MM	±1.20MM
1200< X ≤1600MM	±0.80MM
800< X ≤1200MM	±0.50MM
400< X ≤800MM	±0.40MM
120< X ≤400MM	±0.30MM
30< X ≤120MM	±0.20MM
<30MM	±0.10MM

格林触控 GreenTouch		Shenzhen GreenTouch Technology Co.,Ltd			
Model No.:	GT-4W-7B-2	Size	7"	Ratio	18:9
Structure	G+F	Unit	mm	Scale	1:1
Design	李俊	Date	2015.9.5	Page	1/1
Check	付作韦	Date	2015.9.5	Version	A0
Release	汪陈	Date	2015.9.5		

由 Autodesk 教育版产品制作

由 Autodesk 教育版产品制作

由 Autodesk 教育版产品制作