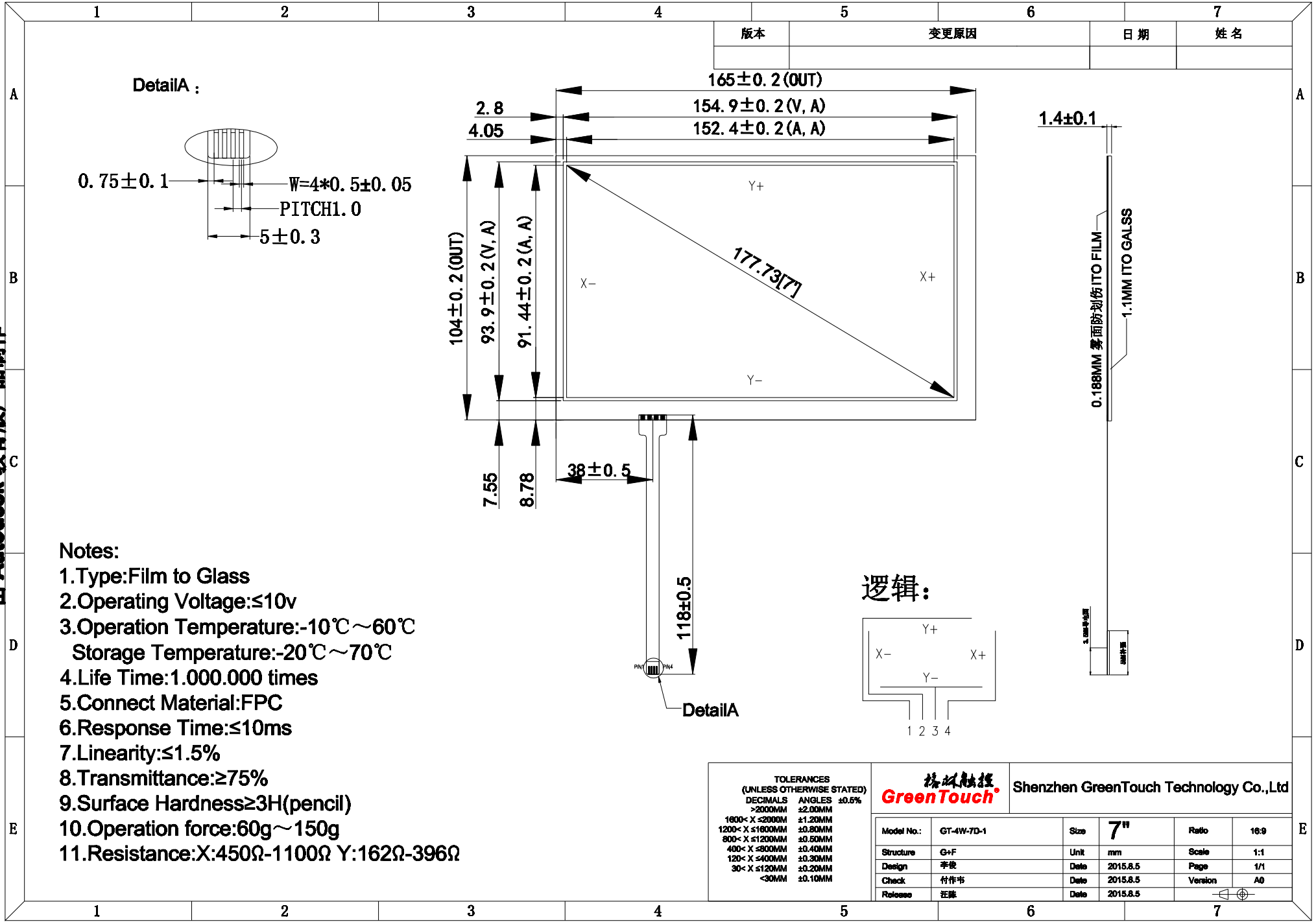


由 Autodesk 教育版产品制作

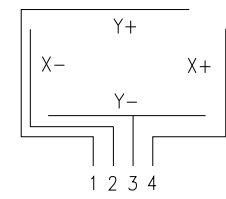
由 Autodesk 教育版产品制作

由 Autodesk 教育版产品制作



- Notes:
- 1.Type:Film to Glass
 - 2.Operating Voltage:≤10v
 - 3.Operation Temperature:-10℃~60℃
Storage Temperature:-20℃~70℃
 - 4.Life Time:1.000.000 times
 - 5.Connect Material:FPC
 - 6.Response Time:≤10ms
 - 7.Linearity:≤1.5%
 - 8.Transmittance:≥75%
 - 9.Surface Hardness≥3H(pencil)
 - 10.Operation force:60g~150g
 - 11.Resistance:X:450Ω-1100Ω Y:162Ω-396Ω

逻辑:



TOLERANCES
(UNLESS OTHERWISE STATED)

DECIMALS	ANGLES	±0.5%
>200MM	±2.00MM	
1600< X ≤2000MM	±1.20MM	
1200< X ≤1600MM	±0.80MM	
800< X ≤1200MM	±0.50MM	
400< X ≤800MM	±0.40MM	
120< X ≤400MM	±0.30MM	
30< X ≤120MM	±0.20MM	
<30MM	±0.10MM	

格林触控 GreenTouch Shenzhen GreenTouch Technology Co.,Ltd

Model No.:	GT-4W-7D-1	Size	7"	Ratio	16:9
Structure	G+F	Unit	mm	Scale	1:1
Design	李俊	Date	2015.8.5	Page	1/1
Check	付作书	Date	2015.8.5	Version	A0
Release	汪燕	Date	2015.8.5		

由 Autodesk 教育版产品制作